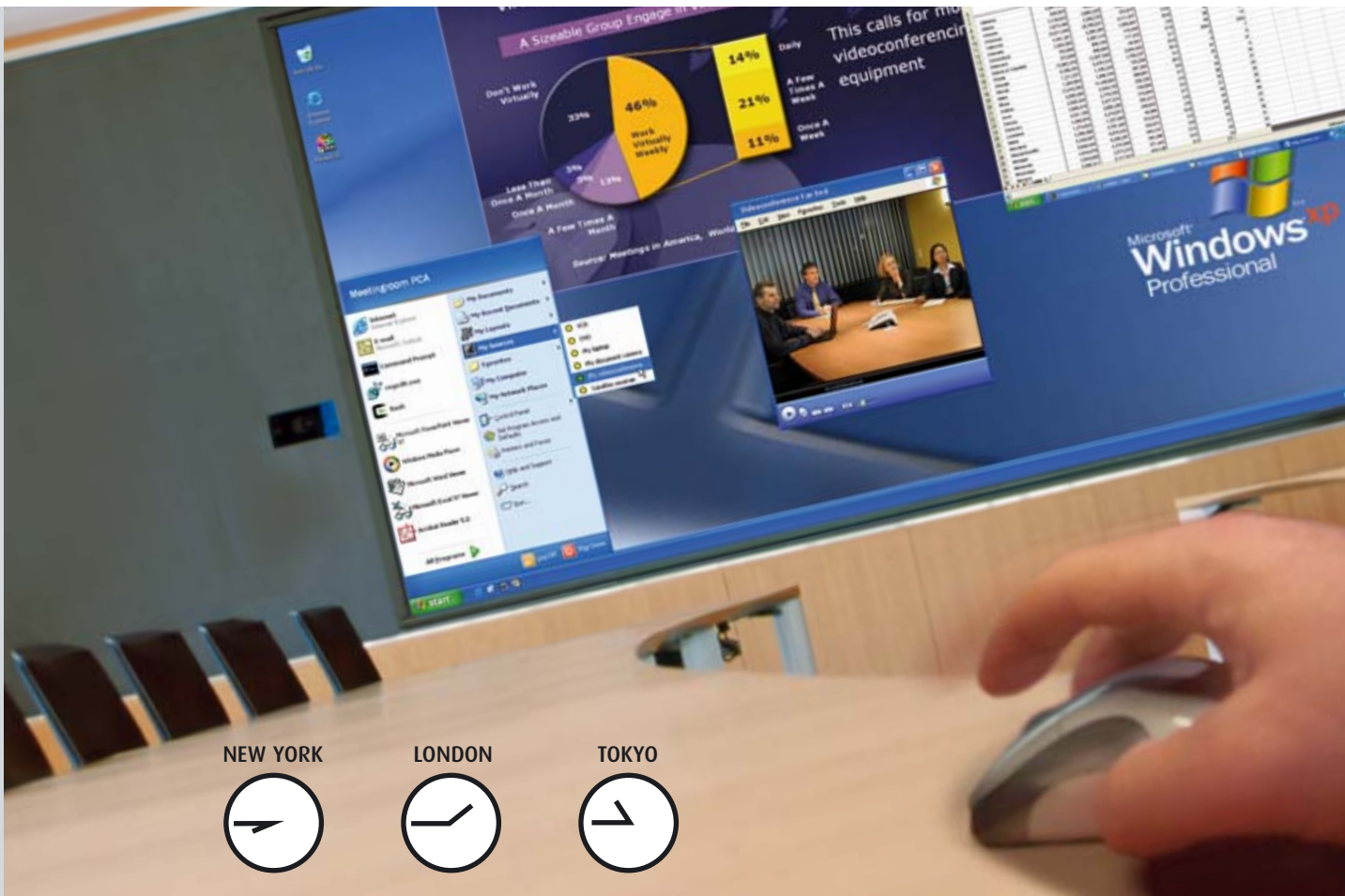


# iCon H600



## Network-centric HDTV projection for efficient multi-site collaboration and information sharing



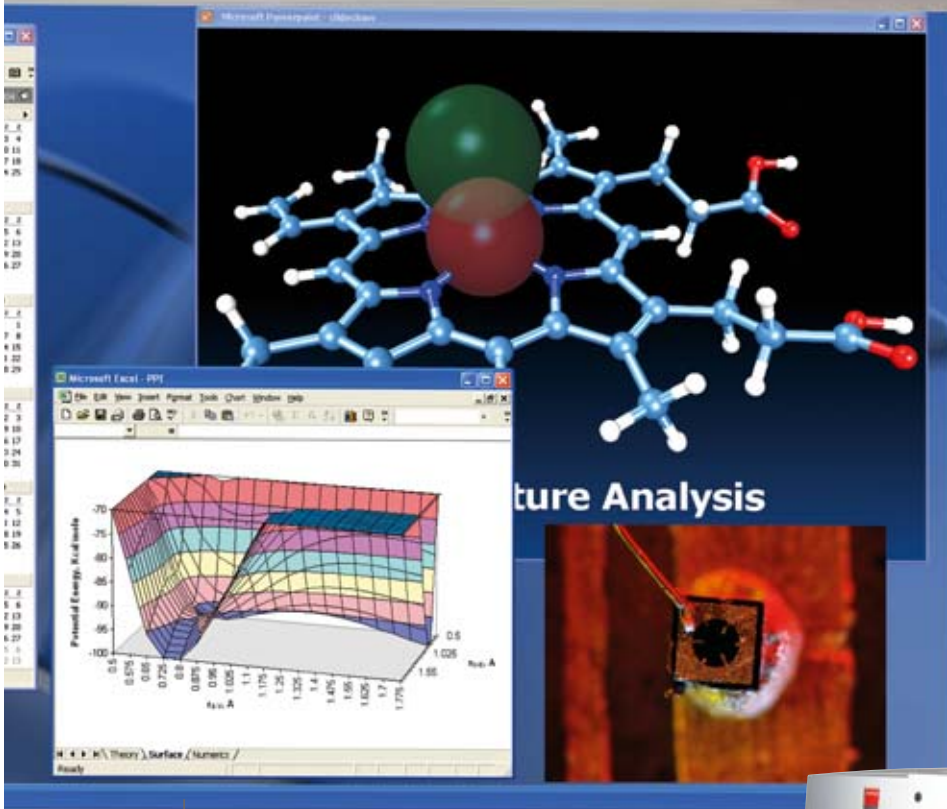
- 6,000 ANSI lumens
- Native HDTV (1920x1080) resolution with 16:9 aspect ratio
- Easy operation using wireless mouse and keyboard
- Increased efficiency through multi-windowing
- Exciting multi-site collaboration
- Flexible integration into existing AV/IT environments
- Cost-effective centralized fleet management

**BARCO**

Visibly yours

# resolution display capabilities

Unprecedented native HDTV 16:9 wide-screen  
(1920 x 1080 pixels)



Linking several iCons to an existing network brings high-definition multi-windowing to multi-site meetings.

Application range:

- Analysis and decision rooms
- Classrooms
- Product development and design rooms
- Multi-site presentations
- HDTV 16:9 video display
- Corporate lobbies and boardrooms
- Museums

## Simultaneous display of all information sources needed

Intuitive understanding of complex relationships between all information displayed leads to more accurate analysis and faster decision making, resulting in a faster Return on Investment (ROI).



**Barco iCon H600**

limited Connectivity Flexible integration

# Exciting multi-site collaboration with high

## Barco iCon H600: network-centric visualization

Easy and intuitive operation using Windows XP

Up to four external video or data windows can be added to the iCon's internal computer windowing capabilities.



Stream your PC's desktop over LAN to the projector, from your office or from the meeting room, thanks to Barco's Proximity Desktop utility.

Immediate access to all sources and files through the familiar Windows™ XP interface, by simply using mouse and keyboard.

- The iCon is equipped with a powerful, upgradeable Pentium 4-based platform display server
- Operation through the familiar Windows™ XP desktop interface enables users to control all content with a mouse and keyboard, eliminating the need for a traditional remote control.
- The iCon's desktop remains visible as backdrop, with freely positional windows on top, showing other video and data sources.
- Information is effortlessly obtained from the company's network to the projector and is as easy to use as your own laptop.
- Access is password protected which also makes it possible to limit visitor's access, as desired.

### Book your meetings via iCon

Look at the iCon's shared Outlook agenda and book the time you need in a free slot. You can have a complete overview of what's going on in all networked visualization sites. The iCon automatically powers up to display your welcome slide and shuts down after the meeting.



Freely position and scale the windows to suit your specific presentation needs. Any window layout can be saved and recalled from the Windows desktop.



Ease-of-use

Increased efficiency

Un

# resolution display capabilities

**Stream video content over the network.**  
Frequently used video content can even be saved on the hard disk of the projector to be retrieved upon demand.

**Display various sources:**  
DVD-player, HDTV video, document camera, laptop, ...



Wide 16:9 screen f

Virtual meetings  
Increase business efficiency

**Save expensive travelling time.**  
Meet with all persons and teams as if they were present. You see their body language and reactions and can share all information on a large 16:9 canvas.



Give you remote

**Automatically launch and give a presentation from a remote location.**

Changes made to a spreadsheet in an office in Europe can be viewed real-time in the office in the US, and vice versa.

**For campus environments the Barco iCon visually links facilities and interlinks between different campuses.**

**Retrieve any file from the network**  
straight from the iCon, eliminating the need to bring along laptops to meetings.

NEW YORK



# All visualization sites centrally managed

## Native HDTV 1920 x 1080 pixels

More and more companies adopt the HDTV format for showing impressive company videos. The latest state-of-the-art computer hardware shifts to more eye-friendly 16:9 viewing. Barco's iCon gives you the best of both worlds.



format

## Unlimited connectivity, flexible network integration

The iCon's integrated server is easily adapted to the user's existing network infrastructure, enabling instant, collaborative meetings between remote meeting sites. Campus environments can easily be expanded, at little or no cost.

**The iCon's easy integration and flexibility, combined with superior features, ensures superior return on investment.**

## Cost-effective centralized fleet management

Due to the integrated server in the projector, a fleet of projectors can be fully controlled over the network from the central IT Helpdesk. There is no need for support staff to run to meeting rooms to adjust projector settings. These adjustments can be made remotely and instantly (over the network) right from their desks. This results in an improved support from Help Desk.



on **Unrivalled Total Cost-of-Ownership**

# iCon H600 Technical specifications

## Light output

6000 ANSI lumens  
Brightness uniformity: >95%

## Contrast ratio

> 800:1 (full white - full black)

## LCD panels

3 x 1.65" polysilicon LCD panel with native HDTV resolution (1920x1080 pixels)

## Lamp

2 x 300 Watt UHP lamp  
Lifetime: 1500 hrs per lamp

## Available lenses

- Fixed lenses:
 

- QGD (0.86:1)	R9840491
- QFD (1.27:1)	R9840400
- QFD (2.5:1)	R9840290
- QFD (7.0:1)	R9840410
- Zoom lenses:
 

- QHD (1.4 - 2.0:1)	R9849930
- QHD (2.1 - 3.0:1)	R9849810
- QFD (3.4 - 4.5:1)	R9840060
- QFD (4.5 - 6.0:1)	R9840100

## Lens shift range

Vertical: -120% to 120%  
Horizontal: -50% to +50%

## On board display server:

- Provides native 1920 x 1080 pixels resolution
- Pentium 4 - 2,6 Ghz,  
1 GB DDR RAM, 40 GB harddisk (upgradeable)
- 2x PCMCIA slot and 1x PCI slot for Wireless LAN cards, memory cards, extensions for inputs and outputs, Bluetooth
- 2 USB connectors
- PS2 connector
- 2 x 10/100/1000 Mb/s Ethernet RJ-45 connector
- 1x RS-232C (D-9 connector)

## Included software:

- Windows™ XP Professional operating system
- Barco Server software pre-installed on the internal display server
- Barco Client software to be installed on external PCs or laptops for remote control over a LAN or file transmission over a LAN

## Standard inputs

- Layer 1: RGBHV or Component; Composite video; S-Video
- Layer 2: RGBHV or Component; Composite video; S-Video
- Layer 3: DVI and VGA (on D15)
- Layer 4: Available for optional inputs

## Optional inputs

- The following input boards can be placed on any of the 4 layers:
- RGBHV or Component input; Composite video input; S-Video input
  - DVI input and VGA input (on D15)
  - SDI and HDSDI input and loop through

## Outputs:

- DVI out (1920 x 1080 @ 60 Hz) of full screen composed image (including ext. source windows)

## Communication

- 1x RS-232C (D-9 connector)
- mini-jack for wired remote control



## Compatibility:

All current video sources  
All current HDTV sources  
All computer graphics sources with a pixel clock up to 275 Mhz (VGA, XGA, SXGA, SXGA+, UXGA, QXGA: 2048 x 1536 pixels)  
DVI up to UXGA and HDTV resolution  
HD-SDI, SDI optionally available

## Power dissipation

< 2900 BTU/hour

## AC Power

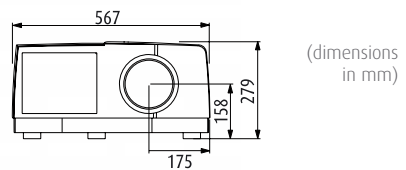
90V - 255V (50 Hz - 60Hz)

## Net weight

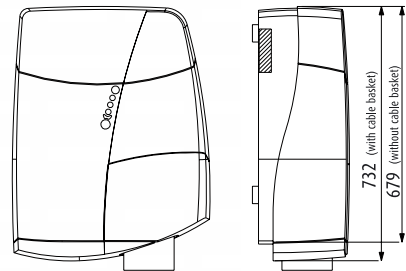
35 kg (77 lbs)

## Dimensions

(D x W x H, without cable basket)  
679 x 567 x 282 mm  
(26.73 x 22.32 x 11.10 inch)



(dimensions in mm)



## Order information

iCon H600	R9011114
Replacement lamp	R9841824
Dual lamp package	R9841825
Ceiling mount	R9849940
Ceiling mount bar short	R9841260
Ceiling mount bar long	R9841261
QXGA RGBHV input board	R9843020
DVI/D15 input board	R9843030
SDI/HDSDI input board	R9843040

Ref n° R599781 December 2006



Barco Presentation & Simulation division is ISO 9001 certified.

The information and data given are typical for the equipment described. However any individual item is subject to change without any notice. The latest version of this product sheet can be found on [www.barco.com/presentation](http://www.barco.com/presentation).

Barco nv, Presentation & Simulation division  
Noordlaan 5, 8520 Kurne - Belgium  
Tel. +32 56 36 82 11 - Fax +32 56 36 85 26  
email: [info.presentation@barco.com](mailto:info.presentation@barco.com)

Barco Visual Solutions, LLC  
3059 Premiere Parkway  
Duluth, GA 30097-4905  
Tel. +1 678 475 8000 - Fax +1 678 475 8100  
email: [BPSmarketing@barco.com](mailto:BPSmarketing@barco.com)

**BARCO**

Visibly yours